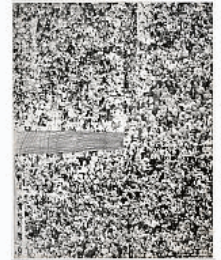


-
1. Screen Prints
Andy Warhol, American, 1928-1987 (artist)
Jesus Christ (depicted)
The Last Supper, 1986
screen print on HMP paper
24 x 31 3/4 in. (61 x 80.6 cm.)
The Andy Warhol Museum, Pittsburgh; Founding Collection, Contribution The Andy Warhol Foundation for the Visual Arts, Inc.
1998.1.2123



-
2. Drawings
Andy Warhol, American, 1928-1987 (artist)
Crowd, 1963
graphite and screen print on Strathmore paper
28 1/2 x 22 5/8 in. (72.4 x 57.5 cm.)
The Andy Warhol Museum, Pittsburgh; Founding Collection, Contribution The Andy Warhol Foundation for the Visual Arts, Inc.
1998.1.2277



-
3. Prints
Andy Warhol, American, 1928-1987 (artist)
Flowers, 1964
offset lithograph on paper
23 1/8 x 23 1/8 in. (58.7 x 58.7 cm.)
The Andy Warhol Museum, Pittsburgh; Founding Collection, Contribution The Andy Warhol Foundation for the Visual Arts, Inc.
1998.1.2373



-
4. Prints
Andy Warhol, American, 1928-1987 (artist)
Elizabeth Taylor, 1932 - 2011 (depicted)
Hollywood (associated)
Liz, 1964
offset lithograph on paper
23 1/8 x 23 1/8 in. (58.7 x 58.7 cm.)
The Andy Warhol Museum, Pittsburgh; Founding Collection, Contribution The Andy Warhol Foundation for the Visual Arts, Inc.
1998.1.2374



-
5. Screen Prints
Andy Warhol, American, 1928-1987 (artist)
Jacqueline Bouvier Kennedy Onassis (depicted)
Jacqueline Kennedy II (Jackie II), 1966
screen print on paper
23 7/8 x 29 7/8 in. (60.6 x 75.9 cm.)
The Andy Warhol Museum, Pittsburgh; Founding Collection, Contribution The Andy Warhol Foundation for the Visual Arts, Inc.
1998.1.2380



Object Summary

6. Screen Prints

Andy Warhol, American, 1928-1987 (artist)
Campbell's, American, 1869- (associated)
Campbell's Soup II: Old Fashioned Vegetable, 1969
screen print on paper
35 x 23 in. (88.9 x 58.4 cm.)
The Andy Warhol Museum, Pittsburgh; Founding Collection, Contribution The Andy Warhol Foundation for the Visual Arts, Inc.
1998.1.2394.1



7. Screen Prints

Andy Warhol, American, 1928-1987 (artist)
Campbell's, American, 1869- (associated)
Campbell's Soup II: Scotch Broth, 1969
screen print on paper
35 x 23 in. (88.9 x 58.4 cm.)
The Andy Warhol Museum, Pittsburgh; Founding Collection, Contribution The Andy Warhol Foundation for the Visual Arts, Inc.
1998.1.2394.2



8. Screen Prints

Andy Warhol, American, 1928-1987 (artist)
Campbell's, American, 1869- (associated)
Campbell's Soup II: Vegetarian Vegetable, 1969
screen print on paper
35 x 23 in. (88.9 x 58.4 cm.)
The Andy Warhol Museum, Pittsburgh; Founding Collection, Contribution The Andy Warhol Foundation for the Visual Arts, Inc.
1998.1.2394.3



9. Screen Prints

Andy Warhol, American, 1928-1987 (artist)
Campbell's, American, 1869- (associated)
Campbell's Soup II: Chicken'n Dumplings, 1969
screen print on paper
35 x 23 in. (88.9 x 58.4 cm.)
The Andy Warhol Museum, Pittsburgh; Founding Collection, Contribution The Andy Warhol Foundation for the Visual Arts, Inc.
1998.1.2394.5



10. Screen Prints

Andy Warhol, American, 1928-1987 (artist)
Campbell's, American, 1869- (associated)
Campbell's Soup II: Golden Mushroom, 1969
screen print on paper
35 x 23 in. (88.9 x 58.4 cm.)
The Andy Warhol Museum, Pittsburgh; Founding Collection, Contribution The Andy Warhol Foundation for the Visual Arts, Inc.
1998.1.2394.9



11. Screen Prints

Andy Warhol, American, 1928-1987 (artist)
Campbell's, American, 1869- (associated)
Campbell's Soup II: Cheddar Cheese, 1969
screen print on paper
35 x 23 in. (88.9 x 58.4 cm.)
The Andy Warhol Museum, Pittsburgh; Founding Collection, Contribution The Andy Warhol Foundation for the Visual Arts, Inc.
1998.1.2394.10



Object Summary

12. Screen Prints

Andy Warhol, American, 1928-1987 (artist)

Cow, 1971

screen print on wallpaper

45 1/2 x 29 7/8 in. (115.6 x 75.9 cm.)

The Andy Warhol Museum, Pittsburgh; Founding Collection, Contribution The Andy Warhol Foundation for the Visual Arts, Inc.

1998.1.2396



13. Screen Prints

Andy Warhol, American, 1928-1987 (artist)

Electric Chair, 1971

screen print on paper

35 1/2 x 48 in. (90.2 x 121.9 cm.)

The Andy Warhol Museum, Pittsburgh; Founding Collection, Contribution The Andy Warhol Foundation for the Visual Arts, Inc.

1998.1.2398.9



14. Screen Prints

Andy Warhol, American, 1928-1987 (artist)

Mick Jagger (depicted)

The Rolling Stones (associated)

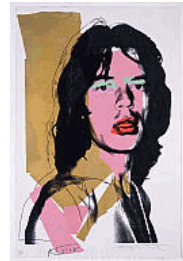
Mick Jagger, 1975

screen print on Arches Aquarelle (Rough) paper

43 1/2 x 29 in. (110.5 x 73.7 cm.)

The Andy Warhol Museum, Pittsburgh; Founding Collection, Contribution The Andy Warhol Foundation for the Visual Arts, Inc.

1998.1.2412.6



15. Screen Prints

Andy Warhol, American, 1928-1987 (artist)

Rupert Jasen Smith, American, 1953-1989 (printer)

Ronald Feldman Fine Arts, Inc., New York ; Jonathan A Editions, Tel Aviv, Israel

Albert Einstein (depicted)

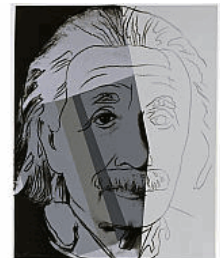
Ten Portraits of Jews of the Twentieth Century: Albert Einstein, 1980

screen print on Lenox Museum Board

40 1/16 x 32 in. (101.8 x 81.3 cm.)

The Andy Warhol Museum, Pittsburgh; Founding Collection, Contribution The Andy Warhol Foundation for the Visual Arts, Inc.

1998.1.2441.4



16. Screen Prints

Andy Warhol, American, 1928-1987 (artist)

Rupert Jasen Smith, American, 1953-1989 (printer)

Andy Warhol, American, 1928-1987, New York

\$ (1), 1982

screen print on Lenox Museum Board

19 3/4 x 15 5/8 in. (50.2 x 39.7 cm.)

The Andy Warhol Museum, Pittsburgh; Founding Collection, Contribution The Andy Warhol Foundation for the Visual Arts, Inc.

1998.1.2457.1



Object Summary

17. Screen Prints

Andy Warhol, American, 1928-1987 (artist)
Rupert Jasen Smith, American, 1953-1989 (printer)
Andy Warhol, American, 1928-1987, New York
\$ (1), 1982
screen print on Lenox Museum Board
19 3/4 x 15 5/8 in. (50.2 x 39.7 cm.)
The Andy Warhol Museum, Pittsburgh; Founding Collection, Contribution The Andy Warhol Foundation for the Visual Arts, Inc.
1998.1.2457.3



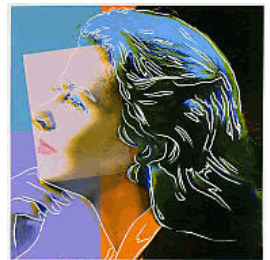
18. Screen Prints

Andy Warhol, American, 1928-1987 (artist)
Rupert Jasen Smith, American, 1953-1989 (printer)
Andy Warhol, American, 1928-1987, New York
\$ (4), 1982
screen print on Lenox Museum Board
40 x 32 in. (101.6 x 81.3 cm.)
The Andy Warhol Museum, Pittsburgh; Founding Collection, Contribution The Andy Warhol Foundation for the Visual Arts, Inc.
1998.1.2458.2



19. Screen Prints

Andy Warhol, American, 1928-1987 (artist)
Rupert Jasen Smith, American, 1953-1989 (printer)
Ingrid Bergman (depicted)
Ingrid Bergman: Herself, 1983
screen print on Lenox Museum Board
38 x 37 7/8 in. (96.5 x 96.2 cm.)
The Andy Warhol Museum, Pittsburgh; Founding Collection, Contribution The Andy Warhol Foundation for the Visual Arts, Inc.
1998.1.2471.1



20. Screen Prints

Andy Warhol, American, 1928-1987 (artist)
Rupert Jasen Smith, American, 1953-1989 (printer)
Ingrid Bergman (depicted)
Ingrid Bergman: The Nun, 1983
screen print on Lenox Museum Board
38 x 38 in. (96.5 x 96.5 cm.)
The Andy Warhol Museum, Pittsburgh; Founding Collection, Contribution The Andy Warhol Foundation for the Visual Arts, Inc.
1998.1.2471.2



21. Screen Prints

Andy Warhol, American, 1928-1987 (artist)
Rupert Jasen Smith, American, 1953-1989 (printer)
Ingrid Bergman (depicted)
Ingrid Bergman: With Hat, 1983
screen print on Lenox Museum Board
38 x 38 in. (96.5 x 96.5 cm.)
The Andy Warhol Museum, Pittsburgh; Founding Collection, Contribution The Andy Warhol Foundation for the Visual Arts, Inc.
1998.1.2471.3



Object Summary

22. Screen Prints

Andy Warhol, American, 1928-1987 (artist)
Sandro Botticelli (associated)
Details of Renaissance Paintings: Sandro Botticelli, Birth of Venus, 1482, 1984
screen print on Arches Aquarelle (Cold Pressed) paper
32 x 44 in. (81.3 x 111.8 cm.)
The Andy Warhol Museum, Pittsburgh; Founding Collection, Contribution The Andy Warhol Foundation for the Visual Arts, Inc.
1998.1.2473.4



23. Screen Prints

Andy Warhol, American, 1928-1987 (artist)
Grace Kelly (depicted)
Hollywood (associated)
Grace Kelly, 1984
screen print on Lenox Museum Board
40 x 32 in. (101.6 x 81.3 cm.)
The Andy Warhol Museum, Pittsburgh; Founding Collection, Contribution The Andy Warhol Foundation for the Visual Arts, Inc.
1998.1.2479



24. Screen Prints

Andy Warhol, American, 1928-1987 (artist)
Rupert Jasen Smith, American, 1953-1989 (printer)
John Wayne (depicted)
Cowboys and Indians: John Wayne, 1986
screen print on Lenox Museum Board
36 x 36 in. (91.4 x 91.4 cm.)
The Andy Warhol Museum, Pittsburgh; Founding Collection, Contribution The Andy Warhol Foundation for the Visual Arts, Inc.
1998.1.2493.1



25. Screen Prints

Andy Warhol, American, 1928-1987 (artist)
Rupert Jasen Smith, American, 1953-1989 (printer)
Geronimo (depicted)
Cowboys and Indians: Geronimo, 1986
screen print on Lenox Museum Board
36 x 36 in. (91.4 x 91.4 cm.)
The Andy Warhol Museum, Pittsburgh; Founding Collection, Contribution The Andy Warhol Foundation for the Visual Arts, Inc.
1998.1.2493.8



26. Screen Prints

Andy Warhol, American, 1928-1987 (artist)
Vladimir Lenin (depicted)
Red Lenin, 1987
screen print on Arches 88 paper
39 3/8 x 29 1/2 in. (100 x 74.9 cm.)
The Andy Warhol Museum, Pittsburgh; Founding Collection, Contribution The Andy Warhol Foundation for the Visual Arts, Inc.
1998.1.2501



Object Summary

27. Screen Prints

Andy Warhol, American, 1928-1987 (artist)
Moonwalk, 1987

screen print on Lenox Museum Board
38 x 38 in. (96.5 x 96.5 cm.)

The Andy Warhol Museum, Pittsburgh; Founding Collection, Contribution The Andy Warhol Foundation for the Visual Arts, Inc.

1998.1.2502.1



28. Screen Prints

Andy Warhol, American, 1928-1987 (artist)
Rupert Jasen Smith, American, 1953-1989 (printer)

Andy Warhol, American, 1928-1987, New York
Camouflage, 1987

screen print on Lenox Museum Board
38 x 38 in. (96.5 x 96.5 cm.)

The Andy Warhol Museum, Pittsburgh; Founding Collection, Contribution The Andy Warhol Foundation for the Visual Arts, Inc.

1998.1.2503.2



29. Screen Prints

Andy Warhol, American, 1928-1987 (artist)
Rupert Jasen Smith, American, 1953-1989 (printer)

Andy Warhol, American, 1928-1987, New York
Camouflage, 1987

screen print on Lenox Museum Board
38 x 38 in. (96.5 x 96.5 cm.)

The Andy Warhol Museum, Pittsburgh; Founding Collection, Contribution The Andy Warhol Foundation for the Visual Arts, Inc.

1998.1.2503.4



30. Screen Prints

Andy Warhol, American, 1928-1987 (artist)
Rupert Jasen Smith, American, 1953-1989 (printer)

Andy Warhol, American, 1928-1987, New York
Camouflage, 1987

screen print on Lenox Museum Board
38 x 38 in. (96.5 x 96.5 cm.)

The Andy Warhol Museum, Pittsburgh; Founding Collection, Contribution The Andy Warhol Foundation for the Visual Arts, Inc.

1998.1.2503.5



31. Screen Prints

Andy Warhol, American, 1928-1987 (artist)
Rupert Jasen Smith, American, 1953-1989 (printer)

Andy Warhol, American, 1928-1987, New York
Camouflage, 1987

screen print on Lenox Museum Board
38 x 38 in. (96.5 x 96.5 cm.)

The Andy Warhol Museum, Pittsburgh; Founding Collection, Contribution The Andy Warhol Foundation for the Visual Arts, Inc.

1998.1.2503.6



Object Summary

32. Screen Prints

Andy Warhol, American, 1928-1987 (artist)
Rupert Jasen Smith, American, 1953-1989 (printer)
Andy Warhol, American, 1928-1987, New York
Camouflage, 1987
screen print on Lenox Museum Board
38 x 38 in. (96.5 x 96.5 cm.)
The Andy Warhol Museum, Pittsburgh; Founding Collection, Contribution The Andy Warhol Foundation for the Visual Arts, Inc.
1998.1.2503.7



33. Screen Prints

Andy Warhol, American, 1928-1987 (artist)
Rupert Jasen Smith, American, 1953-1989 (printer)
Andy Warhol, American, 1928-1987, New York
Camouflage, 1987
screen print on Lenox Museum Board
38 x 38 in. (96.5 x 96.5 cm.)
The Andy Warhol Museum, Pittsburgh; Founding Collection, Contribution The Andy Warhol Foundation for the Visual Arts, Inc.
1998.1.2503.8



34. Screen Prints

Andy Warhol, American, 1928-1987 (artist)
Daisy, ca. 1982
screen print on Lenox Museum Board
38 x 38 in. (96.5 x 96.5 cm.)
The Andy Warhol Museum, Pittsburgh; Founding Collection, Contribution The Andy Warhol Foundation for the Visual Arts, Inc.
1998.1.2521



35. Screen Prints

Andy Warhol, American, 1928-1987 (artist)
Flowers, ca. 1964
screen print on Strathmore paper
40 x 30 1/8 in. (101.6 x 76.5 cm.)
The Andy Warhol Museum, Pittsburgh; Founding Collection, Contribution The Andy Warhol Foundation for the Visual Arts, Inc.
1998.1.2534



36. Screen Prints

Andy Warhol, American, 1928-1987 (artist)
Rupert Jasen Smith, American, 1953-1989 (printer)
Electric Chair, ca. 1978
screen print on Strathmore paper
18 x 24 in. (45.7 x 61 cm.)
The Andy Warhol Museum, Pittsburgh; Founding Collection, Contribution The Andy Warhol Foundation for the Visual Arts, Inc.
1998.1.2612



Object Summary

37. Screen Prints

Andy Warhol, American, 1928-1987 (artist)
Rupert Jasen Smith, American, 1953-1989 (printer)
Marilyn Monroe, American, 1926-1962 (depicted)
Hollywood (associated)
Marilyn Monroe (Marilyn), ca. 1978
screen print on Saunders Waterford (Hot Pressed) paper
21 5/8 x 15 3/8 in. (54.9 x 39.1 cm.)
The Andy Warhol Museum, Pittsburgh; Founding Collection, Contribution The Andy Warhol Foundation for the Visual Arts, Inc.
1998.1.2619



38. Screen Prints

Andy Warhol, American, 1928-1987 (artist)
Muhammad Ali, American, b. 1942- (depicted)
Muhammad Ali, 1978
screen print on Curtis Rag paper
45 x 35 in. (114.3 x 88.9 cm.)
The Andy Warhol Museum, Pittsburgh; Founding Collection, Contribution The Andy Warhol Foundation for the Visual Arts, Inc.
1998.1.2659



39. Screen Prints

Andy Warhol, American, 1928-1987 (artist)
Ambulance Disaster, ca. 1963
screen print on Strathmore paper
40 x 30 1/8 in. (101.6 x 76.5 cm.)
The Andy Warhol Museum, Pittsburgh; Founding Collection, Contribution The Andy Warhol Foundation for the Visual Arts, Inc.
1998.1.2660



40. Screen Prints

Andy Warhol, American, 1928-1987 (artist)
Daily News, ca. 1967
screen print on paper
50 1/4 x 30 1/4 in. (127.6 x 76.8 cm.)
The Andy Warhol Museum, Pittsburgh; Contribution The Andy Warhol Foundation for the Visual Arts, Inc.
2001.6



41. Screen Prints

Andy Warhol, American, 1928-1987 (artist)
Marilyn Monroe, American, 1926-1962 (depicted)
Marilyn, 1967
screen print on paper
36 x 36 in. (91.4 x 91.4 cm.)
The Andy Warhol Museum, Pittsburgh; Museum Loan, Private Collection
L1998.1.1



42. Screen Prints

Andy Warhol, American, 1928-1987 (artist)
Marilyn Monroe, American, 1926-1962 (depicted)
Marilyn, 1967
screen print on paper
36 x 36 in. (91.4 x 91.4 cm.)
The Andy Warhol Museum, Pittsburgh; Museum Loan, Private Collection
L1998.1.2



Object Summary

43. Screen Prints
Andy Warhol, American, 1928-1987 (artist)
Marilyn Monroe, American, 1926-1962 (depicted)
Marilyn, 1967
screen print on paper
36 x 36 in. (91.4 x 91.4 cm.)
The Andy Warhol Museum, Pittsburgh; Museum Loan, Private Collection
L1998.1.4



44. Screen Prints
Andy Warhol, American, 1928-1987 (artist)
Marilyn Monroe, American, 1926-1962 (depicted)
Marilyn, 1967
screen print on paper
36 x 36 in. (91.4 x 91.4 cm.)
The Andy Warhol Museum, Pittsburgh; Museum Loan, Private Collection
L1998.1.5



45. Screen Prints
Andy Warhol, American, 1928-1987 (artist)
Marilyn Monroe, American, 1926-1962 (depicted)
Marilyn, 1967
screen print on paper
36 x 36 in. (91.4 x 91.4 cm.)
The Andy Warhol Museum, Pittsburgh; Museum Loan, Private Collection
L1998.1.6



46. Screen Prints
Andy Warhol, American, 1928-1987 (artist)
Marilyn Monroe, American, 1926-1962 (depicted)
Marilyn, 1967
screen print on paper
36 x 36 in. (91.4 x 91.4 cm.)
The Andy Warhol Museum, Pittsburgh; Museum Loan, Private Collection
L1998.1.7



47. Prints
Andy Warhol, American, 1928-1987 (artist)
Andy Warhol, American, 1928-1987 (depicted)
Self-Portrait, ca. 1967
screen print on plastic
10 7/8 x 8 1/2 in. (27.6 x 21.6 cm.)
The Andy Warhol Museum, Pittsburgh; Founding Collection, Contribution The Andy Warhol Foundation for the Visual Arts, Inc.
TC13.1

